



SKY SIGN REFURBISHMENT

PERTH, WA

SPECIALIST ACCESS - SIGNAGE INSTALLATION

PROJECT

BHP Billiton Sky Sign Refurbishment

CLIENT

BHP Billiton

DURATEC CONTACT

Jonas De Prose 0421 395 171

DESCRIPTION

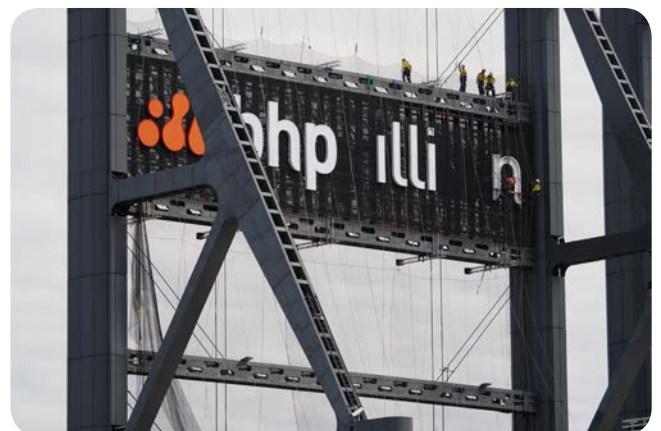
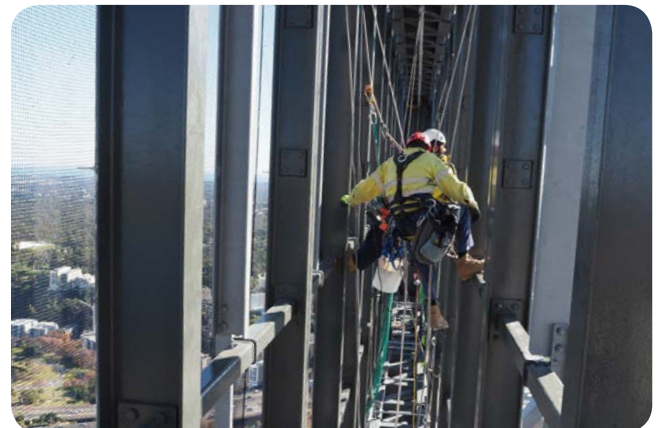
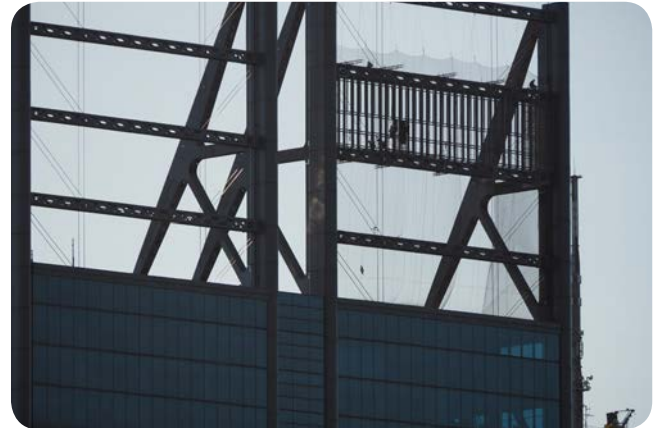
Duratec was engaged to remove the existing signage and design, fabricate and install a new LED double-sided sky sign. The scope included:

- ▶ Three levels of dropped object protection designed and installed.
- ▶ Design, fabrication and installation of structural steel and perforated panels to fit the existing structure.
- ▶ Original steel structure prepared and painted to specification.
- ▶ Implementation of a fault detection system to protect the integrity of the brand.

The result was an improvement of visual aesthetics in line with client's corporate branding.

HIGHLIGHTS

- ▶ 10,950 total labour hours.
- ▶ LTI and major incident free.



IMAGES (FROM TOP TO BOTTOM)

- ▶ Removal of existing signage at over 250m height behind an engineered netting system.
- ▶ Overview of works from the walkway.
- ▶ Installation of lettering on the new sign, showing a distinct contrast between the background and lettering.