



PARMELIA HOUSE REMEDIATION

PERTH, WA

SPECIALIST ACCESS - MAINTENANCE

PROJECT

Parmelia House Northern Elevation Remediation

CLIENT

Australian City Properties

DURATEC CONTACT

Jonas De Prose 0421 395 171

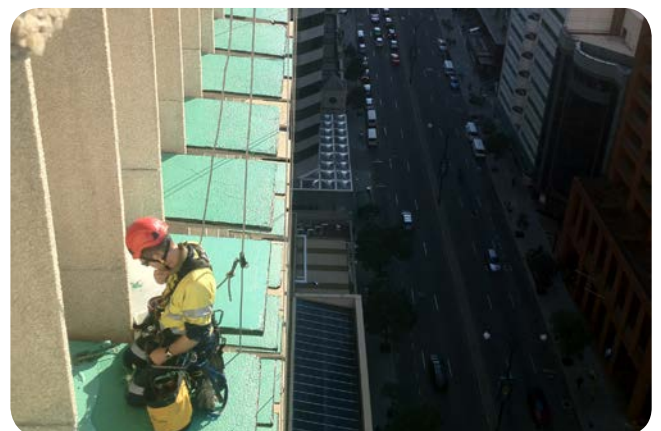
DESCRIPTION

Duratec was engaged to perform a variety of repairs on the northern façade of Parmelia House in Perth. Excessive protrusion of the awnings on the northern façade combined with the low loading capabilities of a foyer roof below posed difficulties for traditional means of access.

Works included specialist concrete repairs, fiberglass strengthening, texture coating and application of a hydrophobic concrete coating. The project ran for 25 weeks.

HIGHLIGHTS

- ▶ 4,724 total labour hours.
- ▶ Zero reportable incidents and LTIs.
- ▶ 408 concrete sun hoods strengthened.
- ▶ 4.55km of joint replacement.
- ▶ 4,300m² of hydrophobic coating.
- ▶ UAV inspection method used.



IMAGES (FROM TOP TO BOTTOM)

- ▶ Overview of Parmelia House in Perth's CBD.
- ▶ Rope access inspection of the building's facade.
- ▶ Top coats being applied as part of the sun hood strengthening system.