



POWER STATION CHIMNEY REFURBISHMENT

LATROBE VALLEY, VIC

SPECIALIST ACCESS - CHIMNEY REFURBISHMENT

PROJECT

Yallourn Power Station Chimney Refurbishment

CLIENT

Beroa Australia

DURATEC CONTACT

Jonas De Prose 0421 395 171

DESCRIPTION

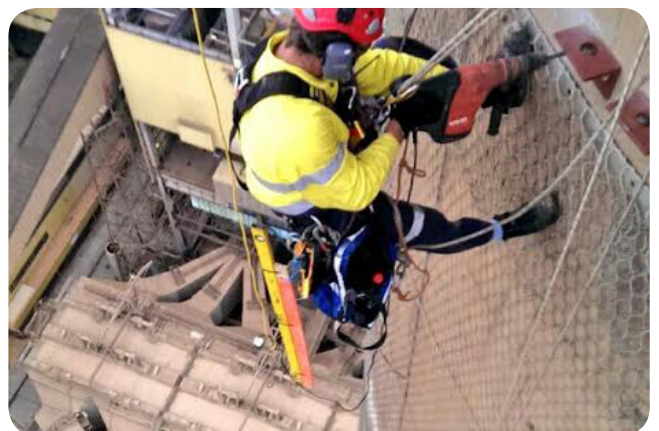
Duratec was engaged by Beroa Australia to assemble and install an Alimak personnel and materials hoist onto the chimney's external wind wall and construct a circumferential platform complete with overhead anchorage structure at the chimney crown.

The scope of works included the assembly of a movable platform suspended from winch motors. The platform was lowered into the flue carrying 12 refractory bricklayers, tools, equipment and materials, capable of repairing over 40,000 bricks within the 14 day outage period.

In addition to the primary scope of works, Duratec provided suspended scaffolds, material handling services and assistance in external concrete and reinforcing steel repair on the chimney's externals.

HIGHLIGHTS

- ▶ 6,584 total labour hours.
- ▶ Zero reportable incidents and LTIs.
- ▶ More than 10t of steel received and assembled atop the 170m structure in only four shifts.



IMAGES (FROM TOP TO BOTTOM)

- ▶ Cathead type overhead structure with external platform.
- ▶ Anchor installation for assembly of a transition platform.
- ▶ Anchor installation for assembly of a transition platform.